

This PowerPoint is a series of slides showing dissection of *Amia calva*, gross bowfin anatomy, and gross views of *Haplobothrium globuliforme* tapeworms in the mid-gut. Host collections were made by anglers at the Green Bottom Wildlife Management Area (GBWMA), Cabell County, West Virginia.

Bowfin, *Amia calva*, from Green Bottom Wildlife Management Area (GBWMA), WV, April '06.



CLARKE ENVIRONMENTAL
MOSQUITO MANAGEMENT
800-323-5727

Breeding site • Larval control
Source inspection



CLARKE ENVIRONMENTAL
MOSQUITO MANAGEMENT
800-323-5727

YOU'RE DRIVING, LIGHT? SOMEONE AT THIS
TABLE WON'T DEAD THE STRATEGY GUIDE!
A DARK ELF CAN CALKLY GIVE SPELLS AT
ONCE, DO SO DAMAGE AND TACKLE GREAT
AND



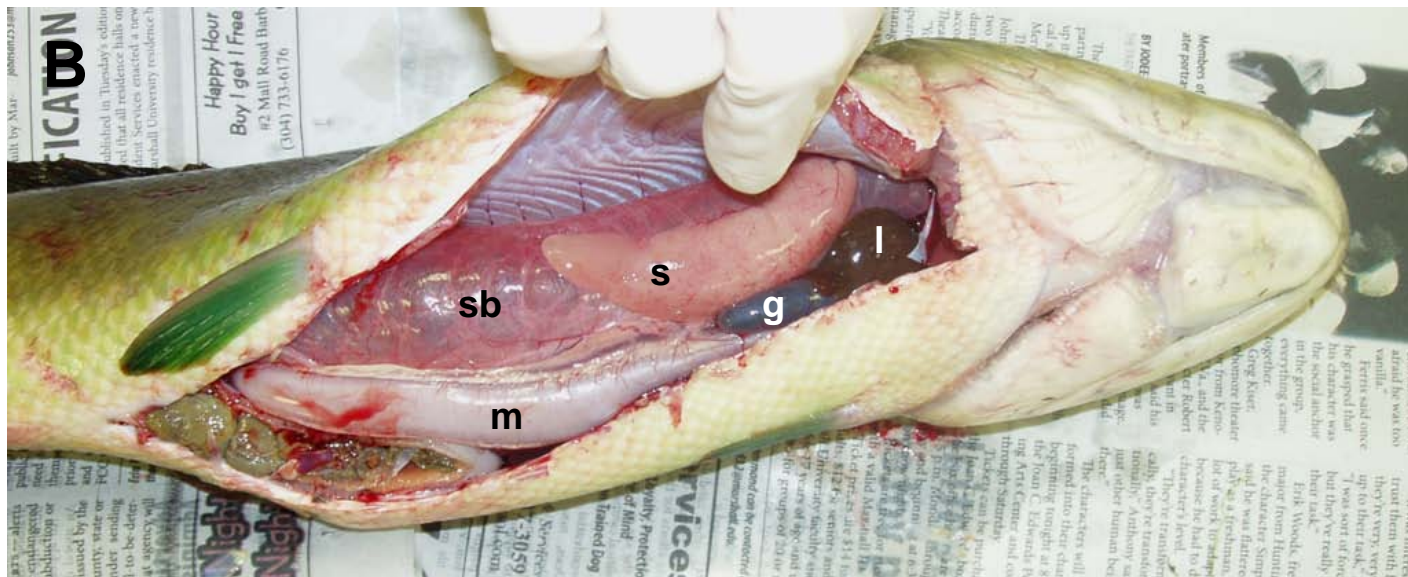
Amia calva, #20 (male); GBWMA, 22 Apr '08.



Katy and Joy working on bowfin #20

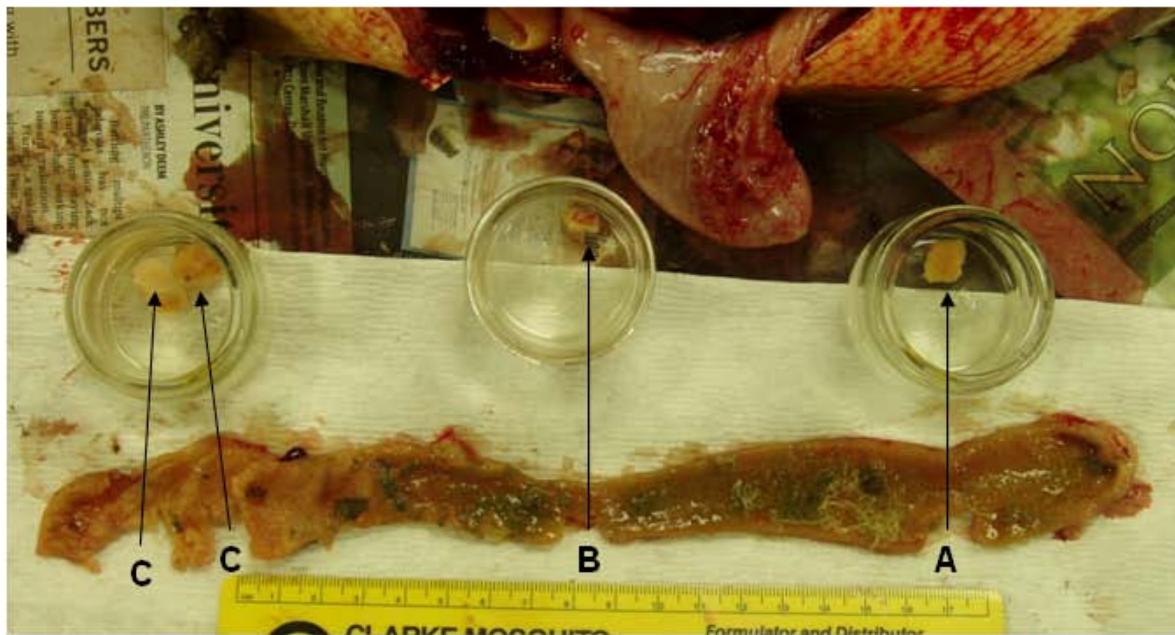


Amia calva: female, #21 (A); male #22 (B). Legend: g = gallbladder; l = liver; m = midgut; s = spleen; sb = swim bladder; u = uterus.



Amia calva gut showing aggregations of *Haplobothrium globuliforme* individuals (red arrows). Host #21 (A); #22 (B); pv = pyloric valve; sv = spiral valve



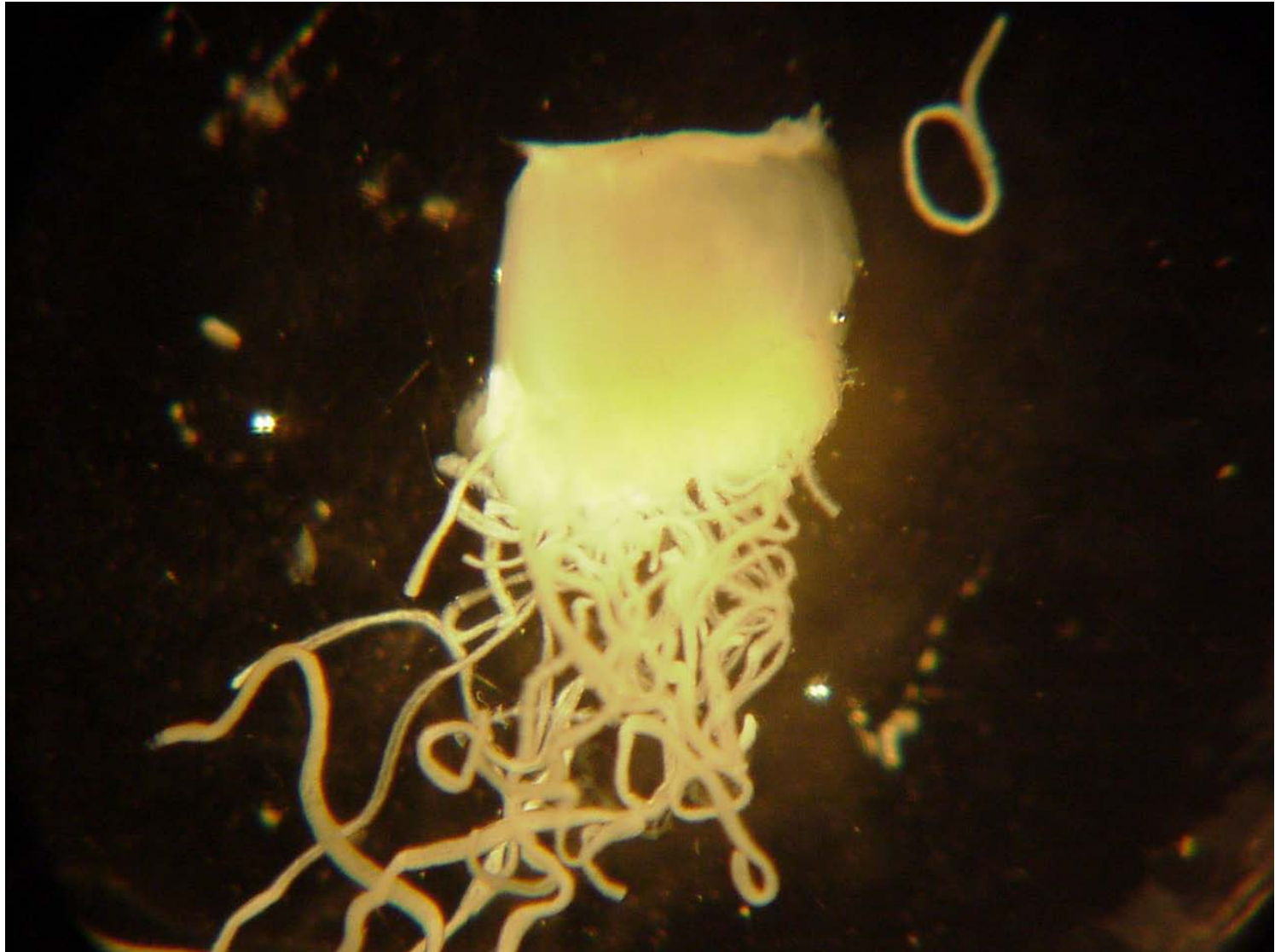


Amia calva #23
intestine. A = proximal
midgut; B = "mid"
midgut; C = hindgut
(spiral valve) blocks for
tissue sectioning.

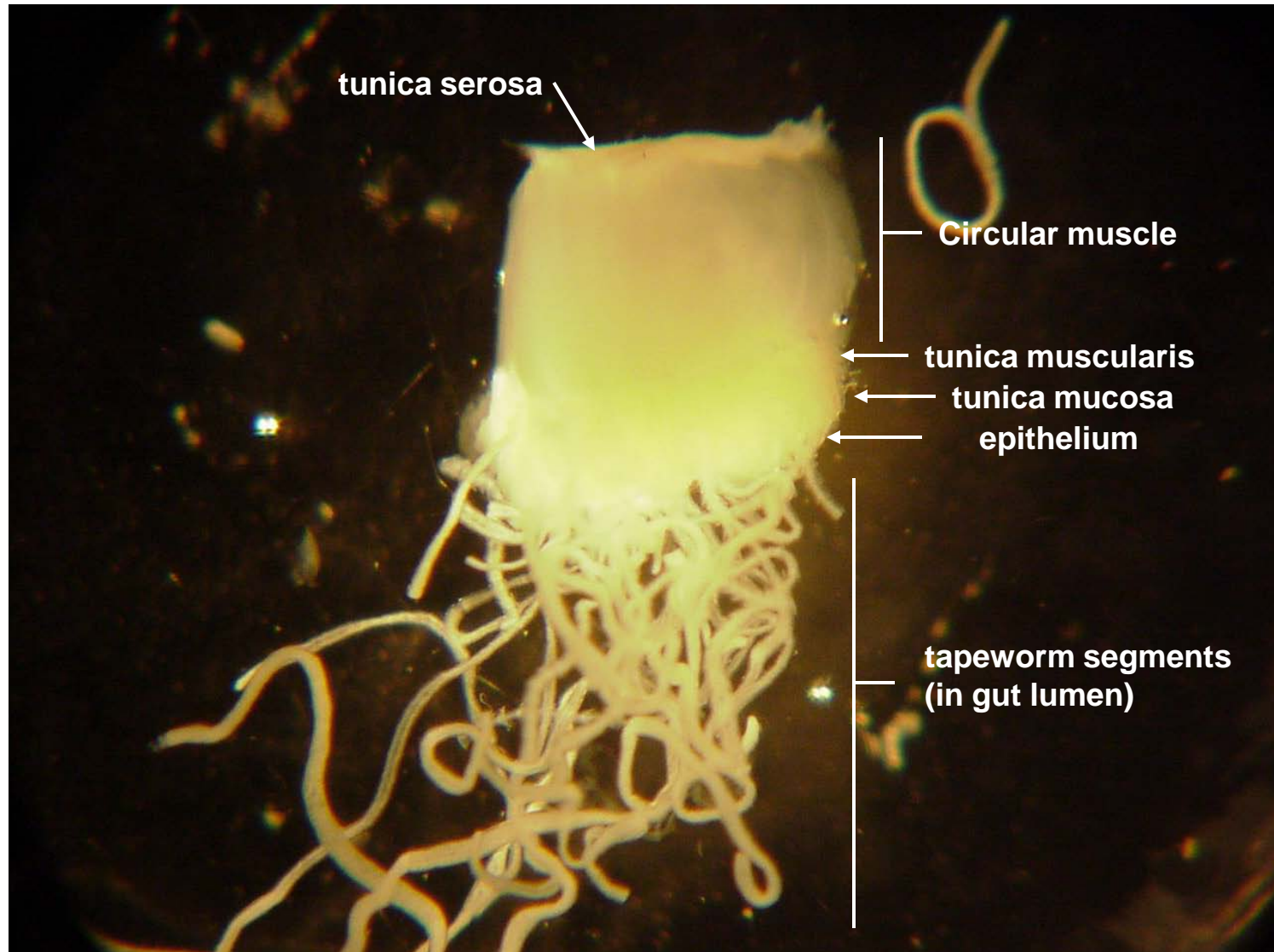
Bowfin, *Amia calva*, proximal mid-gut infected by *Haplobothrium globuliforme* (Cestoda: Pseudophyllidea).



Section of bowfin proximal mid-gut infected with *Haplobothrium globuliforme* tapeworms.



Section of bowfin proximal mid-gut infected with *Haplobothrium globuliforme* tapeworms. Terms tentative.





Haplobothrium globuliforme
(Cestoda: Pseudophyllidea)
in proximal mid-gut of *Amia calva*: GBWMA, April '06.

